

Freeze injury on azalea

Alan Windham, UT Extension, awindha1@utk.edu

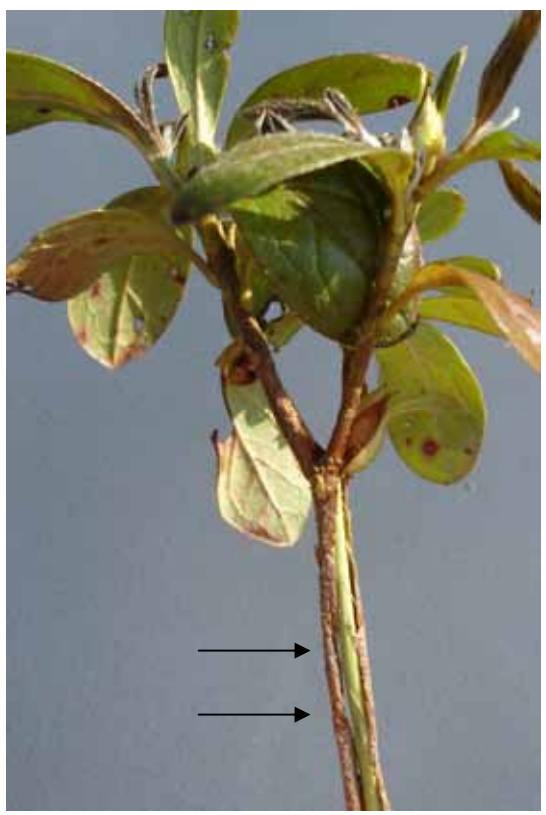
Freeze injury on azalea is first manifested by the bark splitting and pulling away from the stem. If this occurs on the main stem, it usually results in the death of the plant. If it occurs on an isolated stem, callus tissue may form around the wound. This callus tissue may look unusual, smooth, or warty. In most instances, plants with damage to the main stem near ground level will have to be replaced.



Freeze injury on Indica azalea



Freeze injury on Indica azalea



Freeze injury on Encore azalea 'Autumn Debutante' 24 hrs after 18F



Freeze injury on Azalea 'Orchid Purple' 48 hrs after 18F